



**MedDrean PACS Premium
INSTALLATION INSTRUCTIONS
(version 6.5.2.6)**

© 2017, Softneta UAB, Kaunas

All rights reserved in the event of granting of patents or registration as a utility patent.

All names of companies and products mentioned in this user's manual may be trademarks or registered trademarks. References to products of other manufacturers are for information purposes only. Such references are intended neither as an approval nor a recommendation of these products. Softneta UAB accepts no liability for the performance or use of such products.

Other brand names, software and hardware names used in this user's manual are subject to trademark or patent protection. The quoting of products is for informational purposes only and does not represent a trademark misuse.

This user's manual is protected by copyright. Unless expressly authorized in writing, dissemination, duplication or other commercial exploitation of this documentation set or communication of its contents or parts of it is not permitted. In case of infringement, the violator may be liable to pay compensation for damages.

Specifications due to technical developments are subject to change. This user's manual is not subject to the revision service. Please contact the manufacturer or authorized dealer to request the latest edition of the manual.

Table of Contents

Table of Contents 3

Notes on the user`s manual 4

 Purpose and availability of documentation 4

 Questions and comments..... 4

 Explanation of symbols used..... 5

Installation 6

Services and processes 11

MedDream WEB interface..... 14

Uninstall..... 20

Figures..... 22

Index 23

Notes on the user`s manual

Purpose and availability of documentation

This user`s manual describes the installation procedure of MedDream PACS Premium.

Correct installation of the system is imperative for its safe and successful functioning. You should therefore ensure that you are thoroughly familiar with the instructions before starting the installation procedure.

The installation instructions and other documentation enclosed with MedDream PACS Premium should be kept accessible to users at all times to ensure that the information required for the use of MedDream PACS Premium is readily available.

MedDream PACS Premium is not intended to replace skilled and qualified medical professional. The software should only be used by people who have been trained and is acquainted with its functions, capabilities and limitations.

Users must be aware that the quality, accuracy and correctness of the output data displayed on the screen, printed or sent from MedDream PACS Premium depends on the quality, accuracy and correctness of the input data, the user`s interface with the data, the quality, calibration and other parameters of printer or monitoring device.

MedDream PACS Premium has been tested extensively, however, it is possible that errors may remain/emerge in the software. Users must be aware of the potential for errors and in case of an error or for other assistance, please contact Softneta UAB Customer support:

- write an e-mail info@softneta.com

Questions and comments

If you have any questions or comments regarding this user`s manual, please contact Softneta UAB Customer support.

Explanation of symbols used

The symbols used in this daily workflow refer to important safety information which warn against possible health risks or fatal injuries and contain useful notes. Whenever you see these symbols, read the accompanying information carefully and observe all safety notes and information in the user manual, daily workflow and on the device labels.

WARNING

Indicates a hazardous situation which may result in a fatal or serious bodily injury if the appropriate safety precautions are not heeded.



CAUTION

Indicates a hazardous situation which may result in a minor injury if the appropriate safety precautions are not heeded.



CAUTION – PROPERTY DAMAGE

Indicates possible device damage if the appropriate safety precautions are not heeded.



Information, hints and advice for a better understanding of the instructions to be observed in the operation of the instrument.

Installation

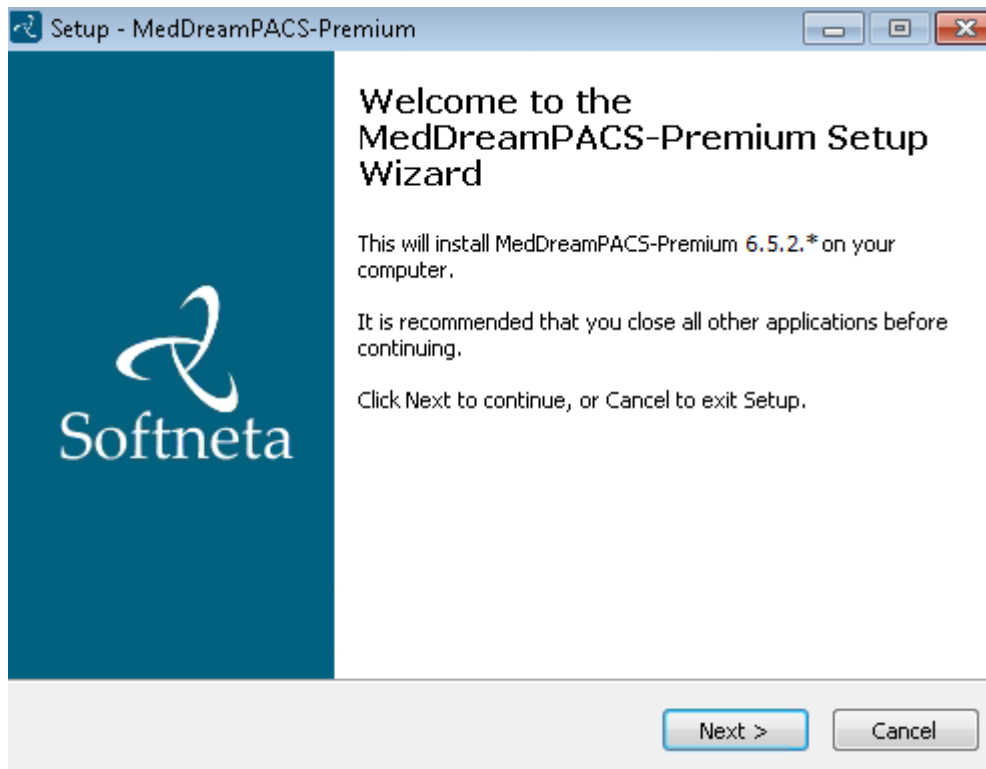


Figure 1. Setup Wizard.

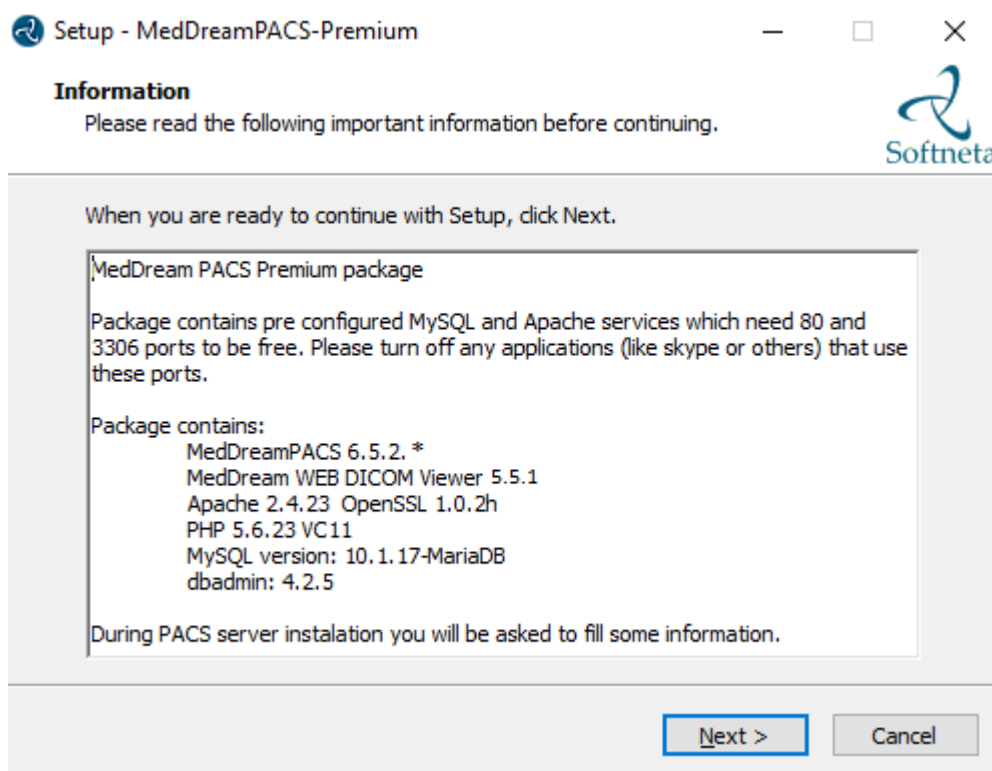


Figure 2. MedDream PACS Premium package information.

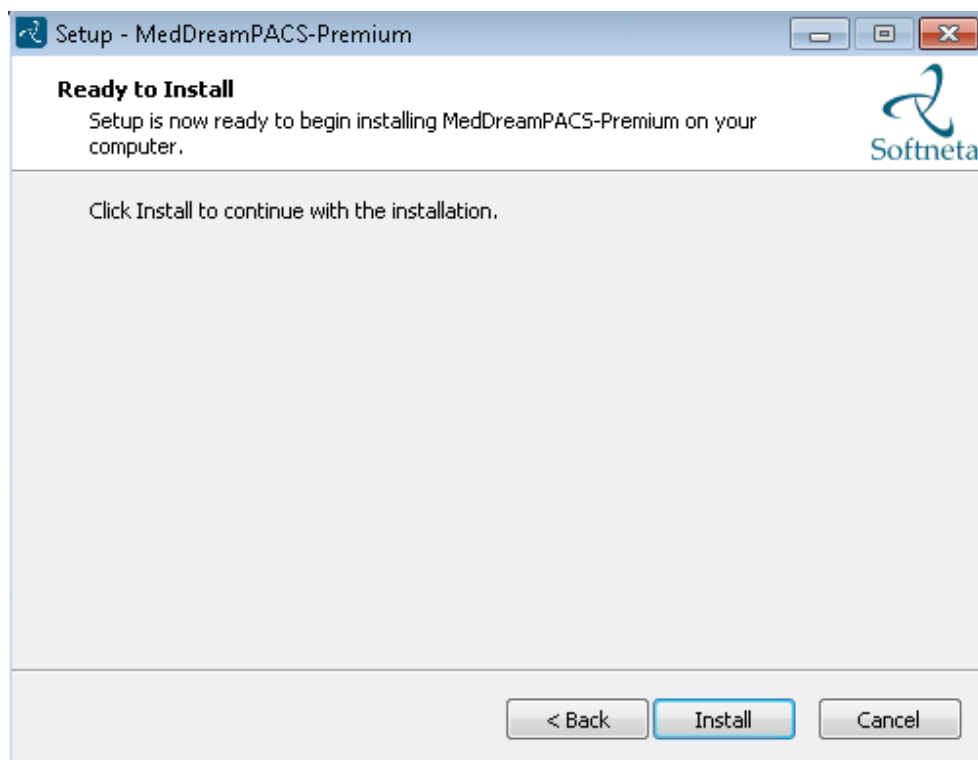


Figure 3. Beginning of installation.

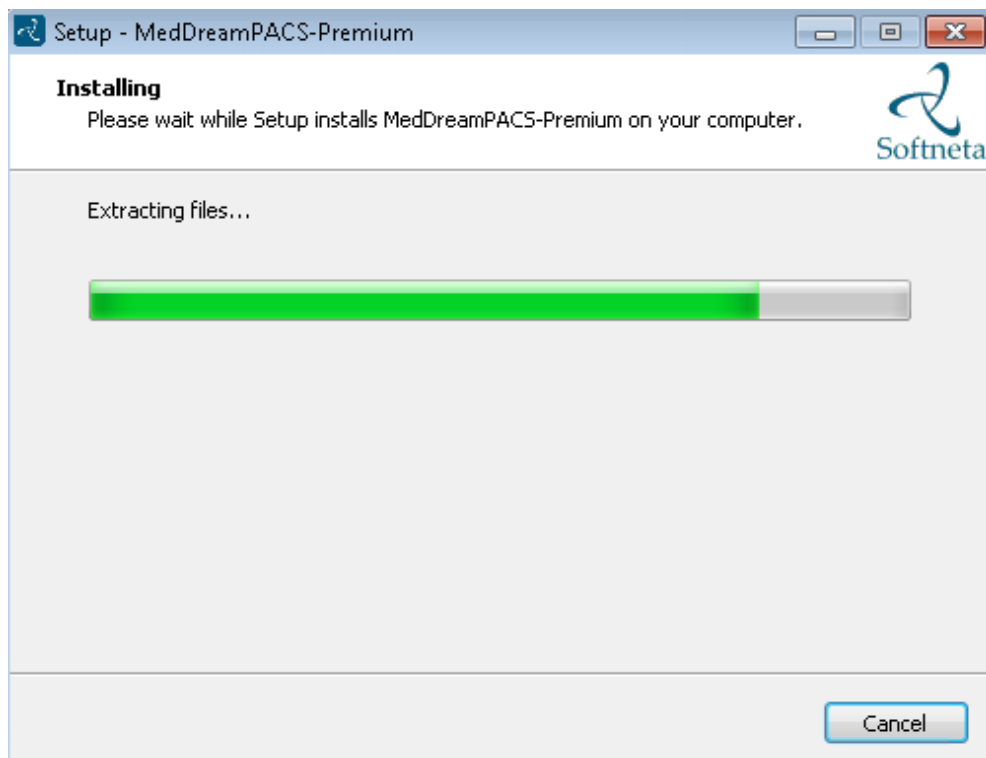


Figure 4. Installation.



Connection information also can be found in C:/MedDreamPACS-Premium/passwords.txt".

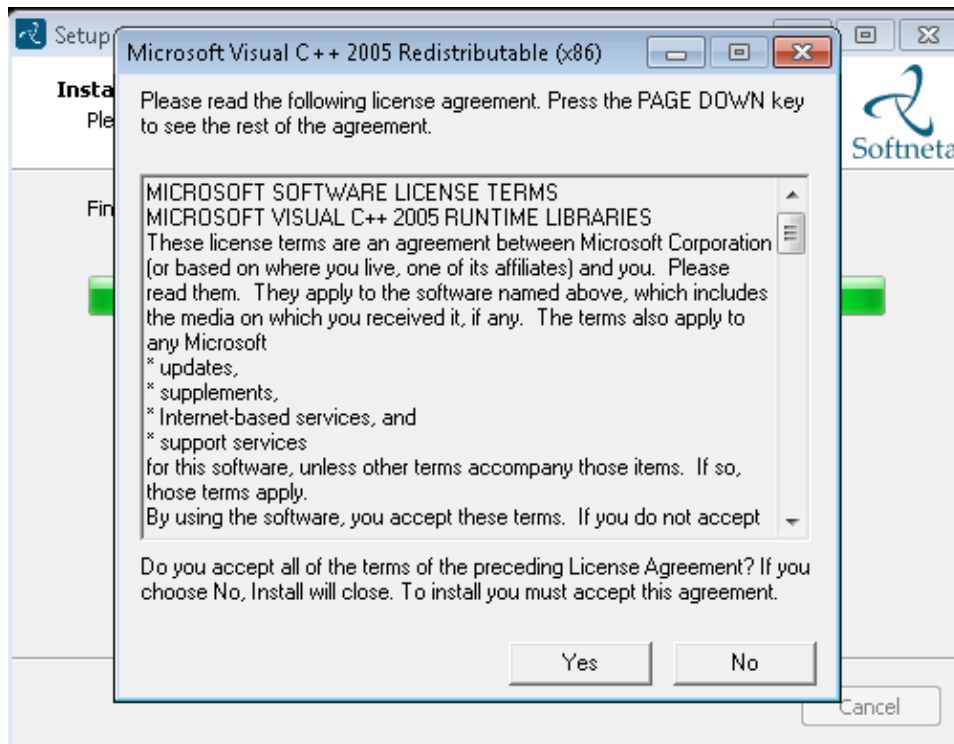


Figure 5. Microsoft Visual C++ 2005 installation.

Microsoft Visual C++ 2005 must be installed when it will be asked by installer

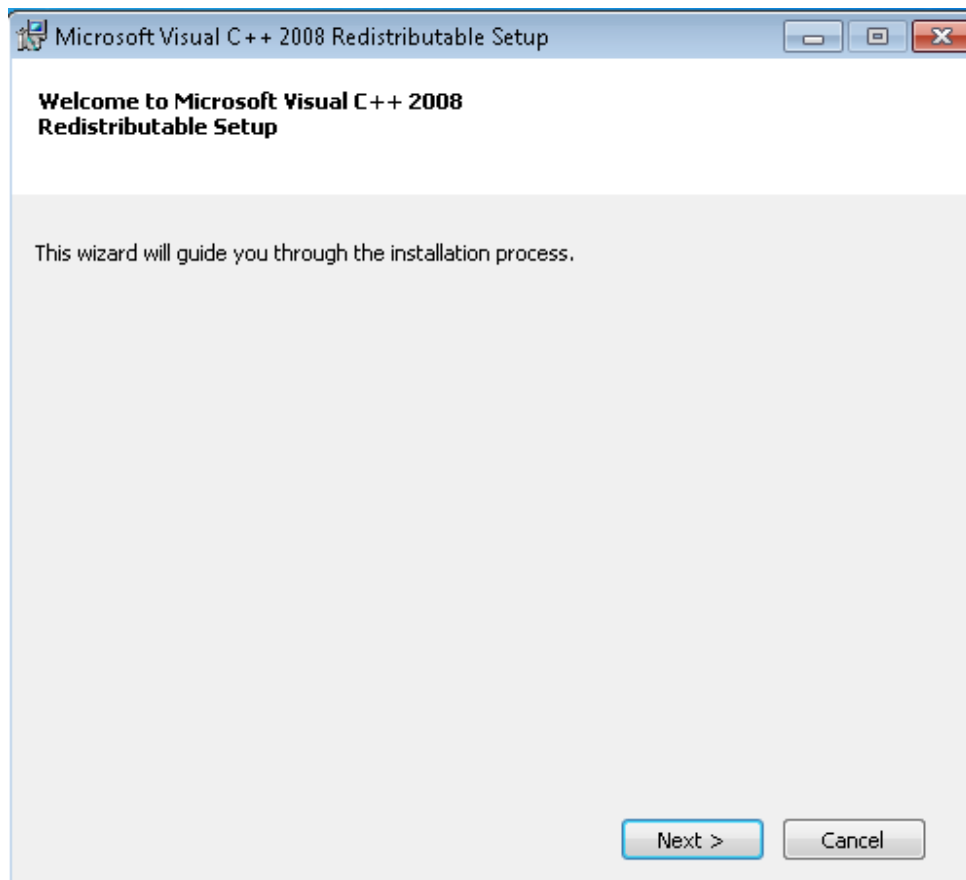


Figure 6. Microsoft Visual C++ 2008 installation

Microsoft Visual C++ 2008 must be installed when it will be asked by installer

The screenshot shows the 'PACS ONE Installer' window with the following configuration details:

- DICOM Section:**
 - Application Entity Title: PACS
 - Server Port: 104
 - Log File Directory: C:\MedDreamPACS-Premium\PACS\log
- Database Section:**
 - Database Host: localhost
 - Database Name: PACS
 - Username: dicom
 - Password: *****
- Storage Section:**
 - Default Archive Directory: C:\MedDreamPACS-Premium\DICOM
 - Archive Format: DicomPart10 (Default)
- HL-7 Message Listener Option Section:**
 - Enable HL-7 Message Listener Option
 - HL-7 Listener Port: 7777
 - HL-7 Message Persistence: 90 Days

At the bottom of the window are four buttons: Upgrade, Install, Uninstall, and Cancel.

Figure 7. PACS server installation

Please fill right information:

- Application Entity Title - your AET which will be used for receiving studies
- Server port - usually it's 104 but can be other and make sure that this port are free and open in firewall
- Database Name - there write how your database will be called
- Username - can be different, default DICOM and response only from service to database connection
- Password - create password for user above
- Default Archive Directory is : C:\MedDreamPACS-Premium\DICOM

Press install and you will be asked to insert MySQL user and password (default: root / demo).



Also all required or commended info will be shown during installation process.

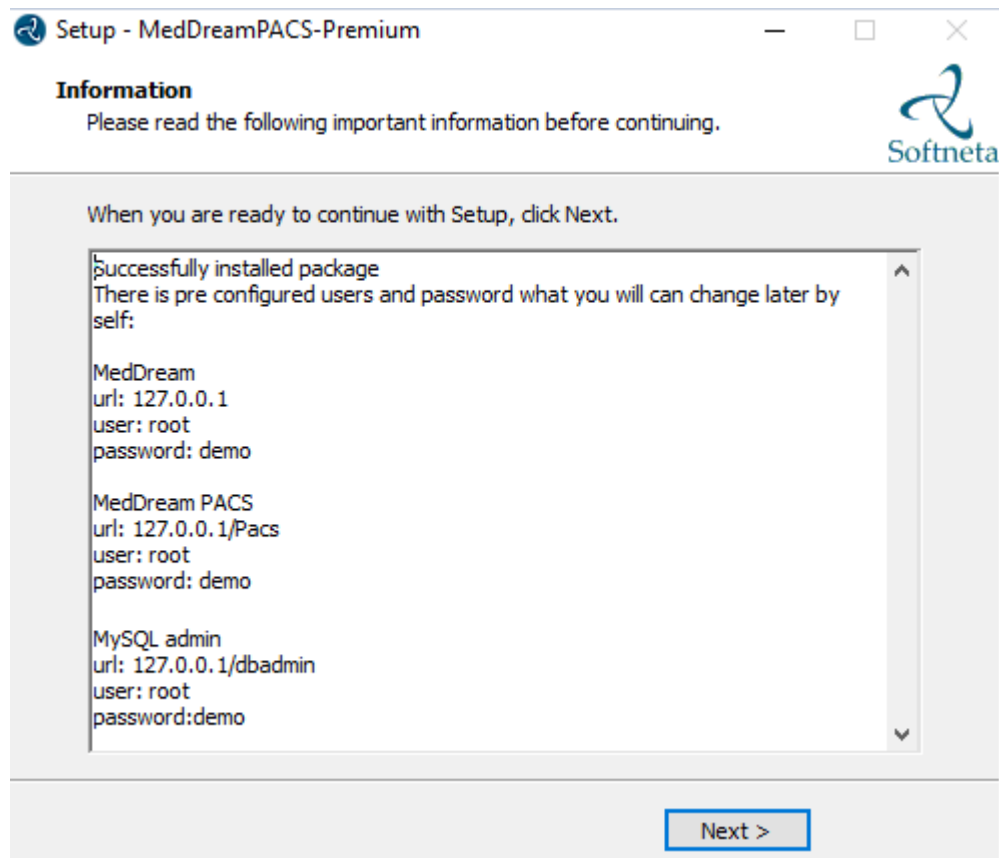


Figure 8. Connection info



Also after installation all connection info can be found "C:\MedDreamPACS-Premium\passwords.txt".

Services and processes



Ensure that all 3 services (Apache2.4, MySQL,PACS) installed and running.

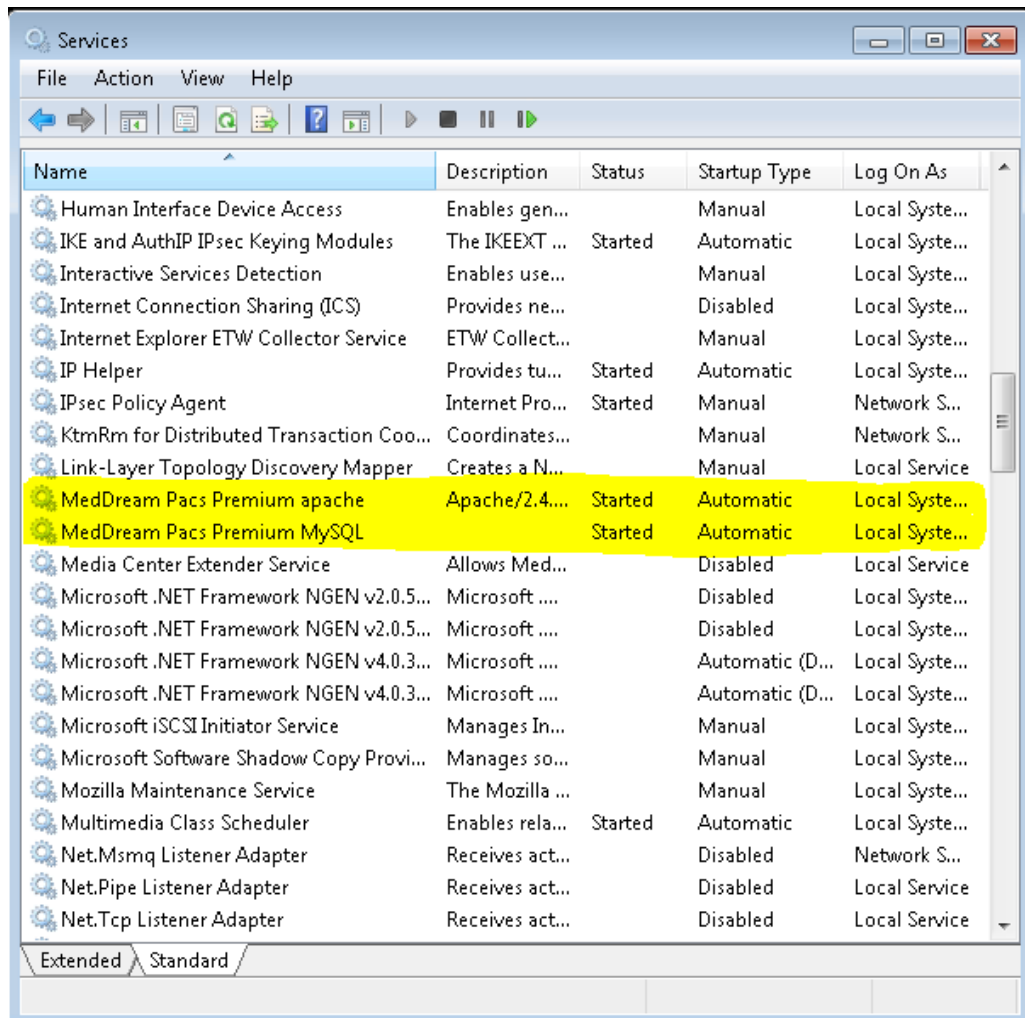


Figure 9. Services.

If **MedDream Pacs Premium apache** service not running or can't start up please check is 80 free.

MedDream Pacs Premium MySQL Database server use 3306 port.

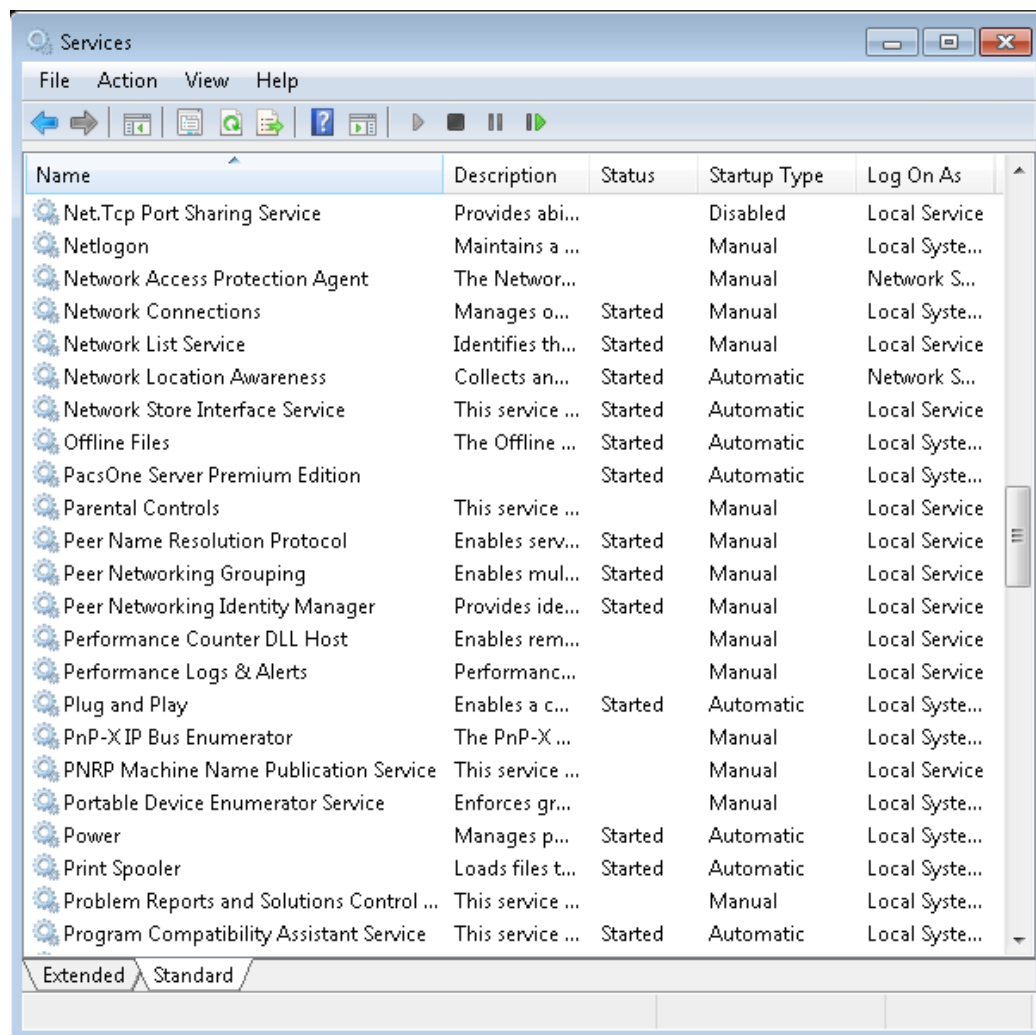


Figure 10. PACS service

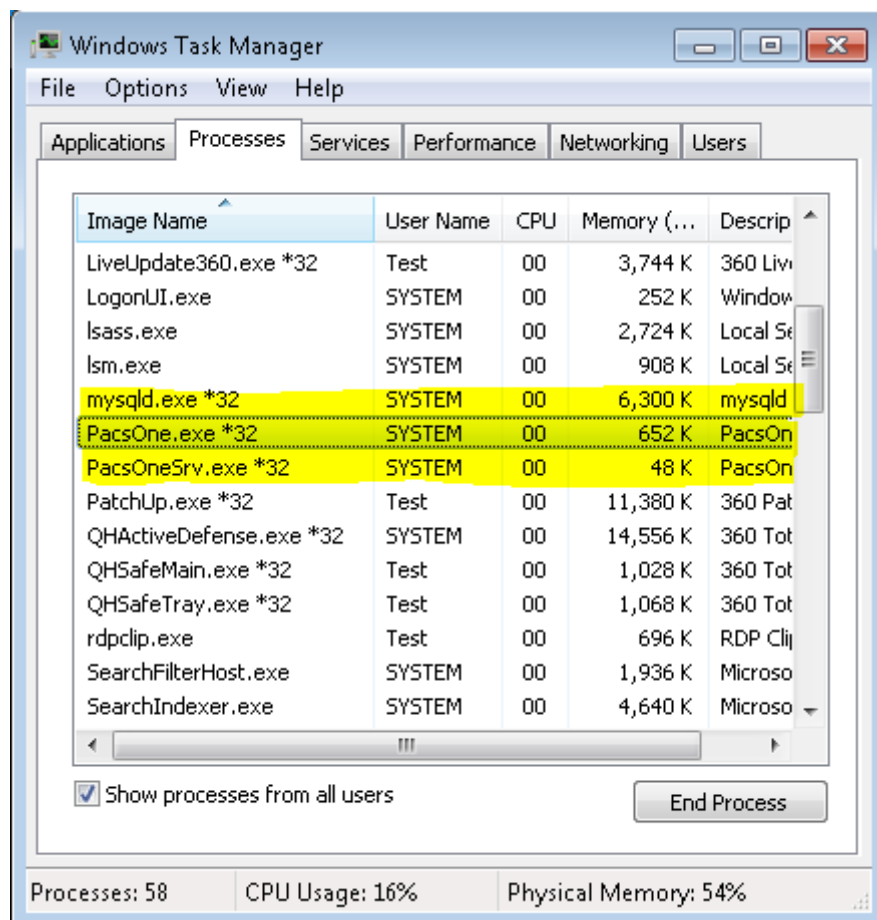


Figure 11. Processes

Be sure that both PACS processes running on machine also mysql.exe and httpd.exe shows in this tab.

MedDream WEB interface

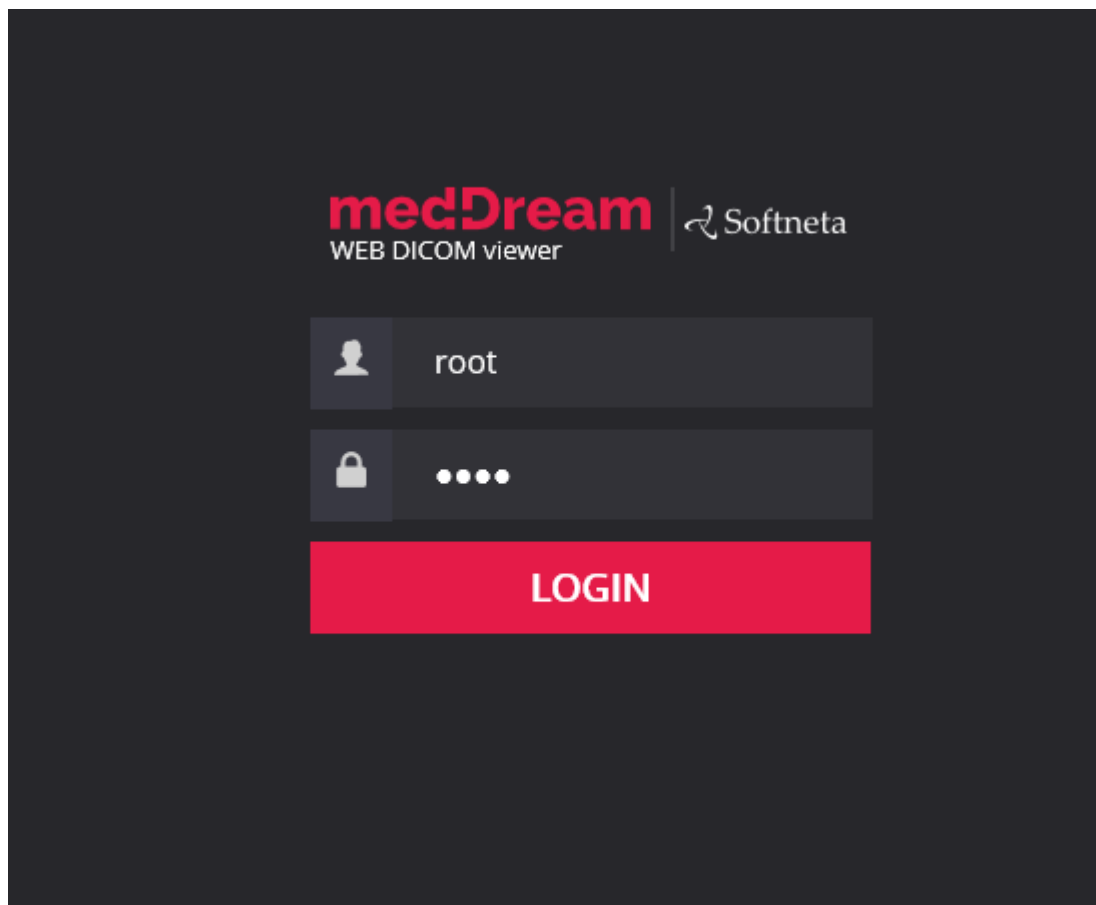


Figure 12. MedDream WEB interface.

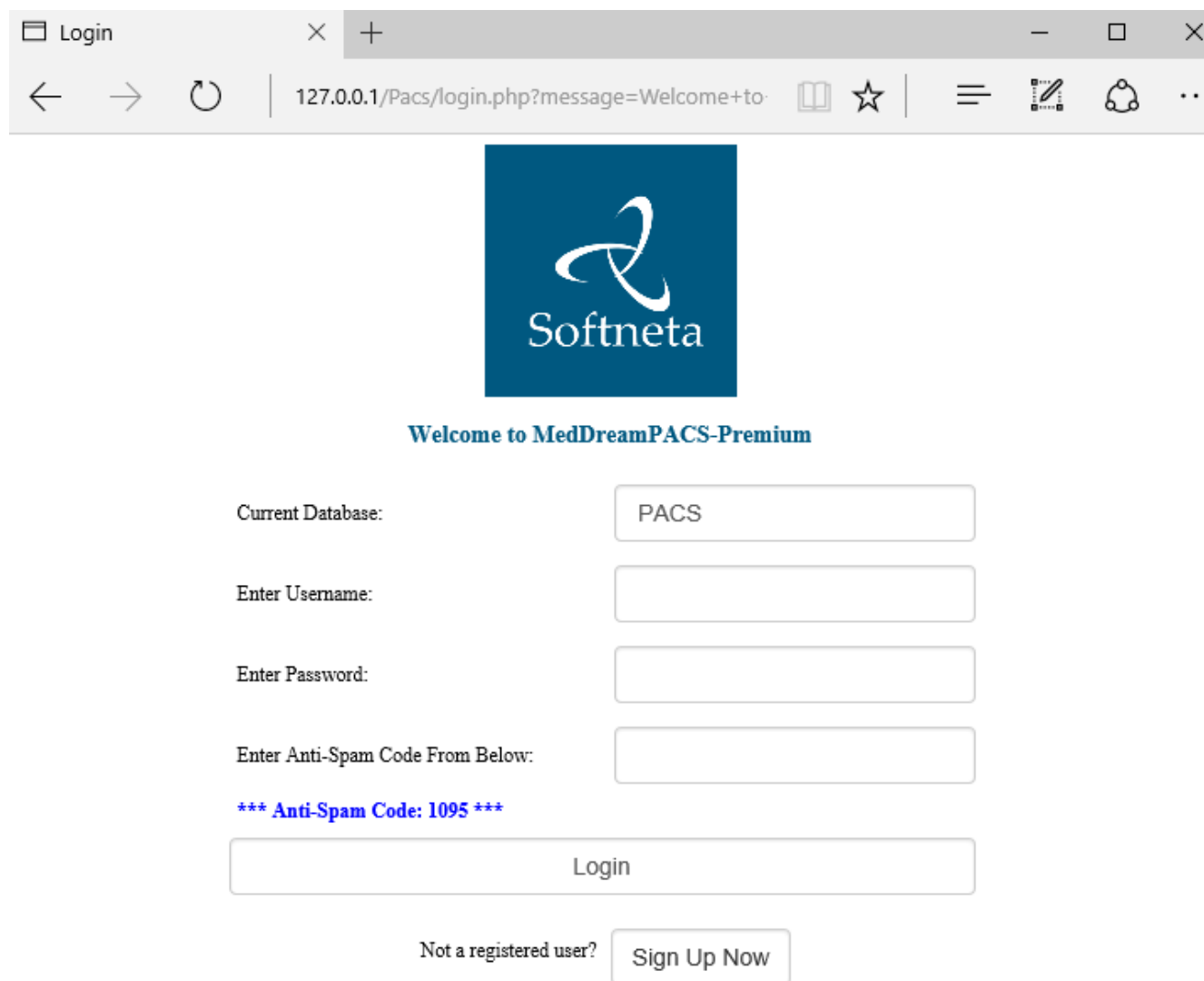
MedDream WEB DICOM viewer is set as root directory of web service and can be found <http://127.0.0.1>

Database: your chosen database name during installation step Figure 7.

Username: root

Password: demo

MedDream PACS administrating interface



MedDreamPACS-Premium 6.5.2

Copyright 2016 (c) Softneta

Figure 13. PACS web interface.

MedDream PACS administration panel can be found <http://127.0.0.1/Pacs>

Database: your chosen database name during installation step Figure 7.

Username: root

Password: demo

Setup MedDream Pacs server to receive DICOM files

1. Login in to MedDream PACS (Figure 13.)
2. Go to Dicom AE and press add

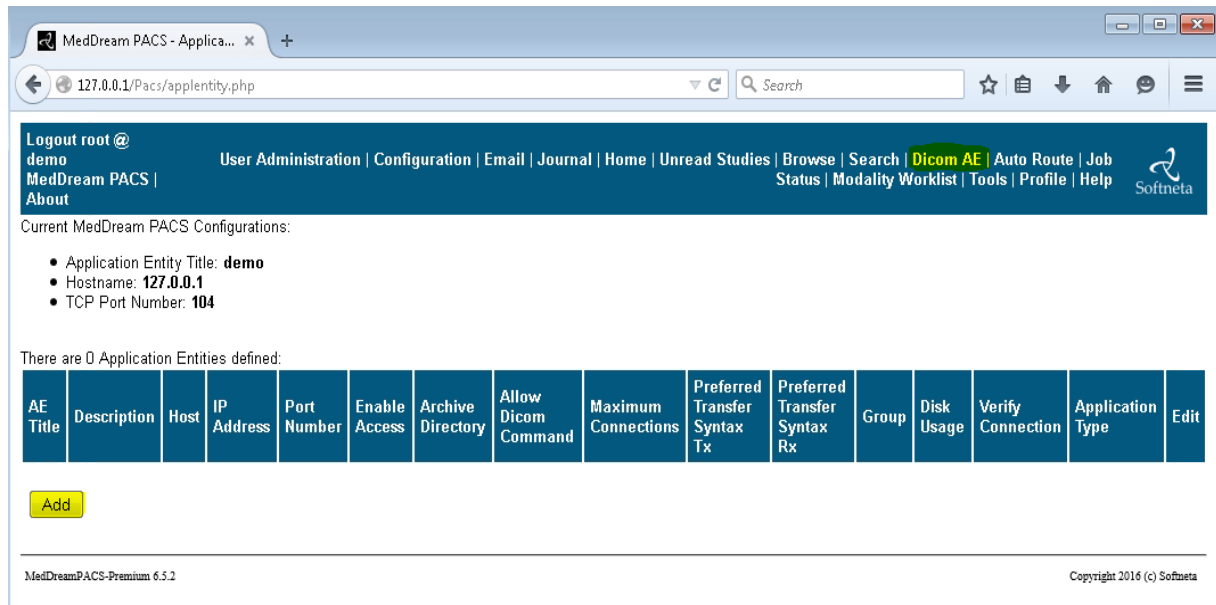


Figure 14. DICOM AE administrating

3. Fill next form with your DICOM device information

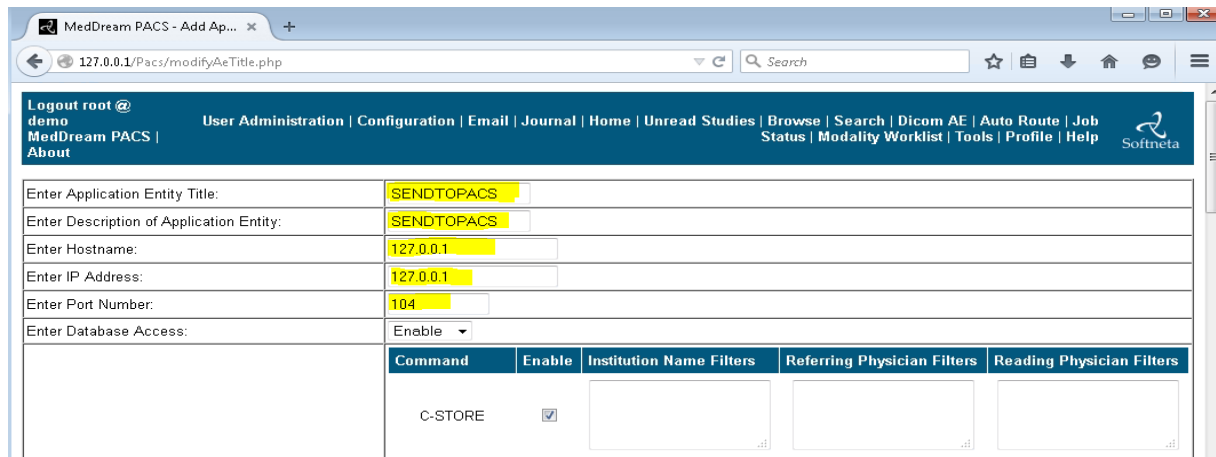


Figure 15. DICOM device information

4. Go to the bottom of the page and press “add”

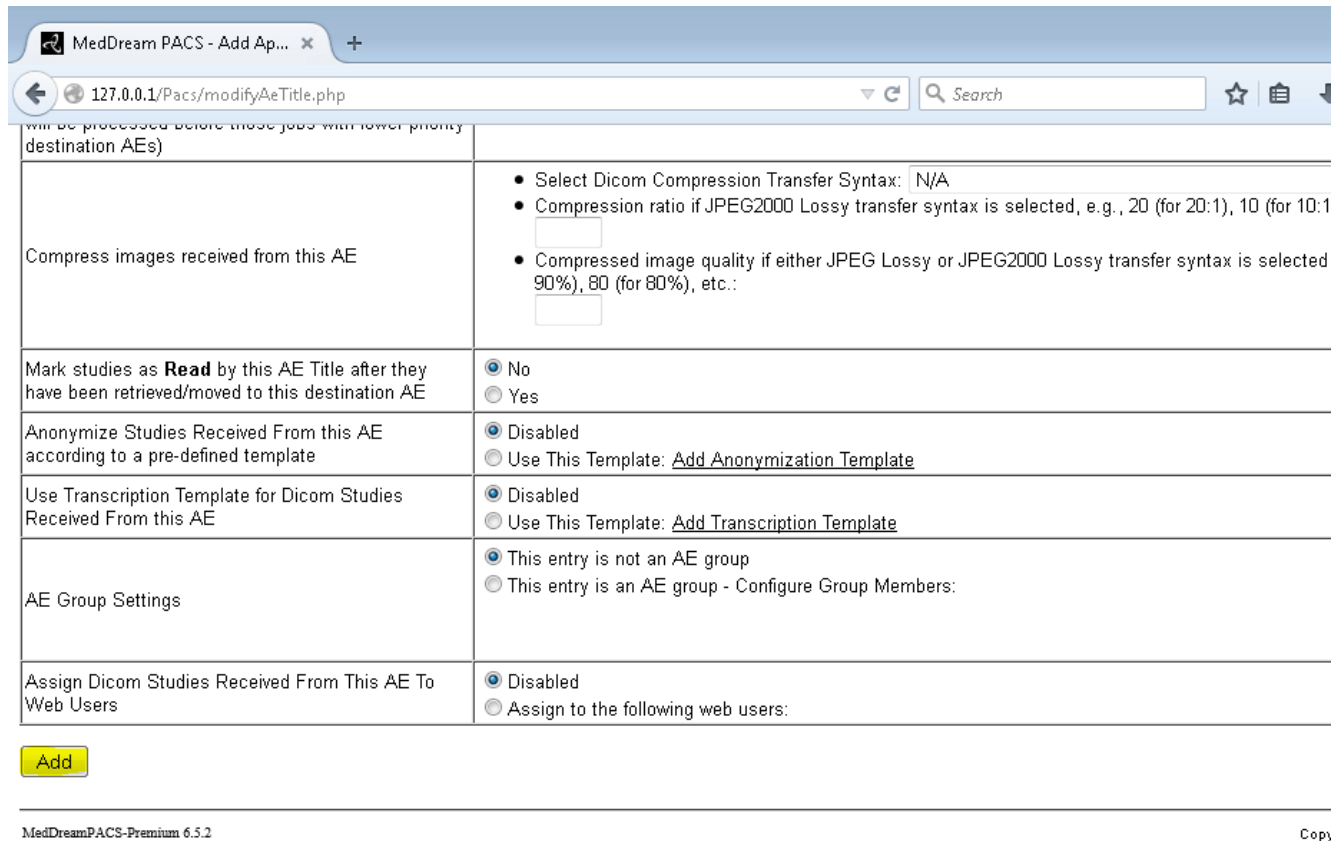


Figure 16. Add device to listening list

5. Now you have your device in the listening list

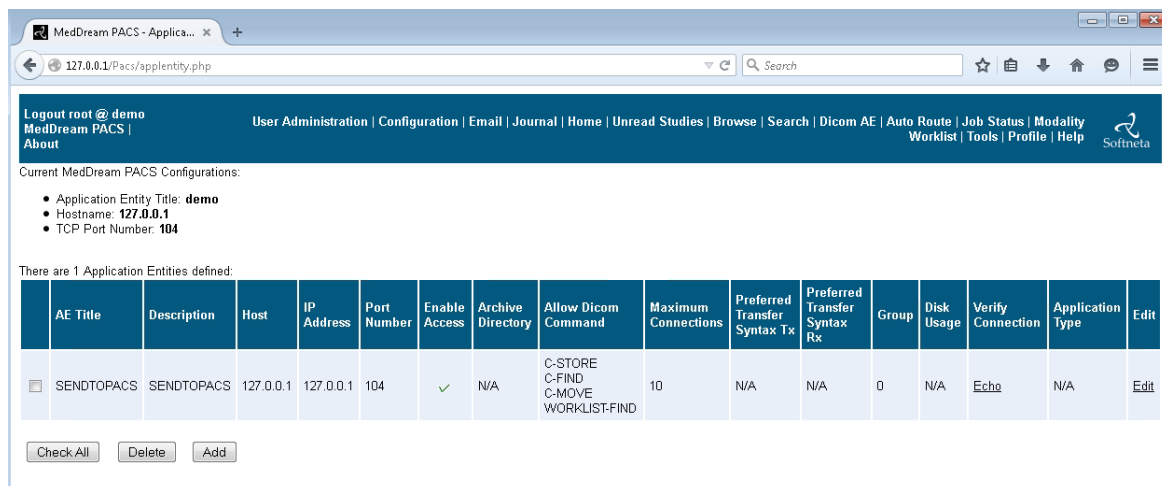


Figure 17. DICOM devices list

6. Now you need to configure your device to send DICOM files to server

Title:	demo
Description:	demo
Host:	127.0.0.1
IP:	127.0.0.1
Port:	104

Figure 18. DICOM device configuration local example

For IP address please use your MedDream PACS LAN or external IP

7. If everything configured well than now you can send files to MedDream PACS server directly from your device

MySQL database administrating with phpMyAdmin

http://127.0.0.1/dbadmin

Username: root

Password: demo

Database: PACS

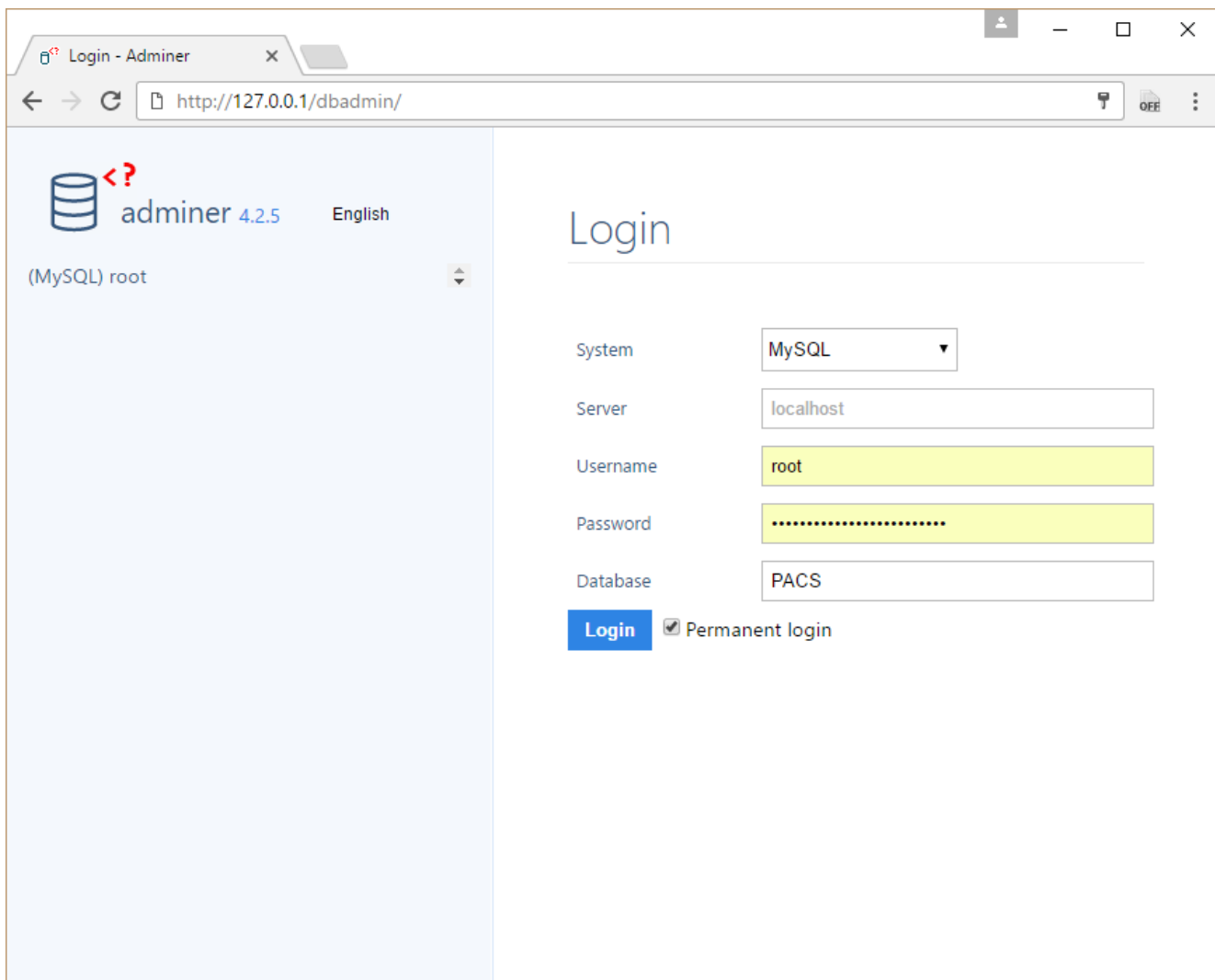


Figure 19. dbadmin connection.

Uninstall

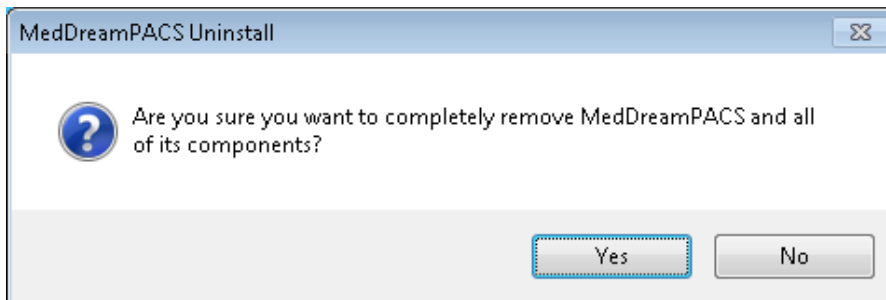


Figure 20. A confirmation window of uninstallation.

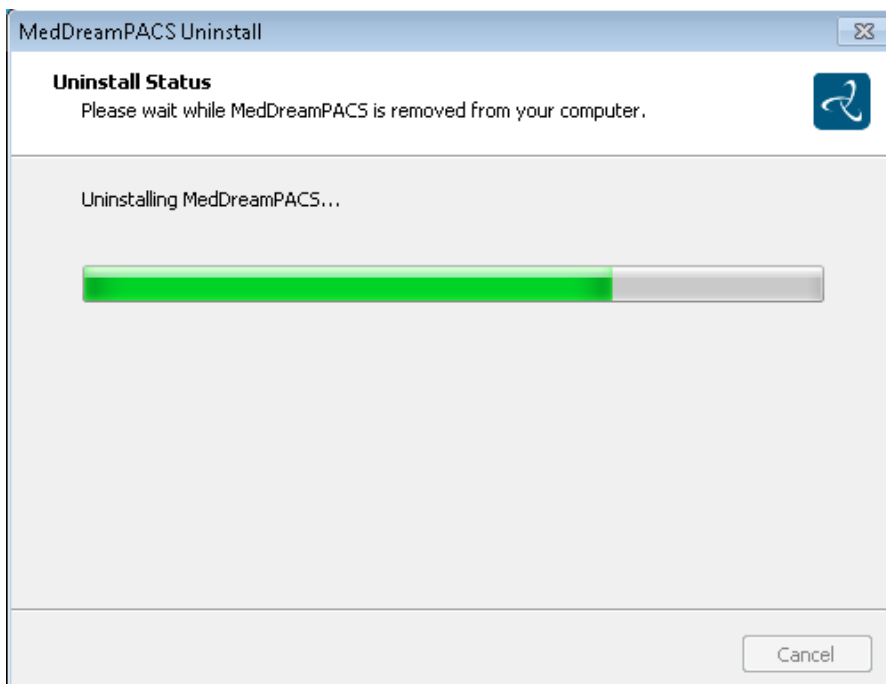


Figure 21. Uninstalling.

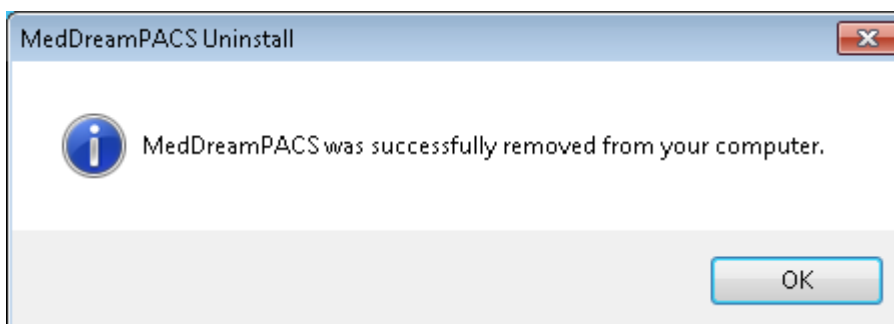


Figure 22. Confirmation that system is uninstalled.

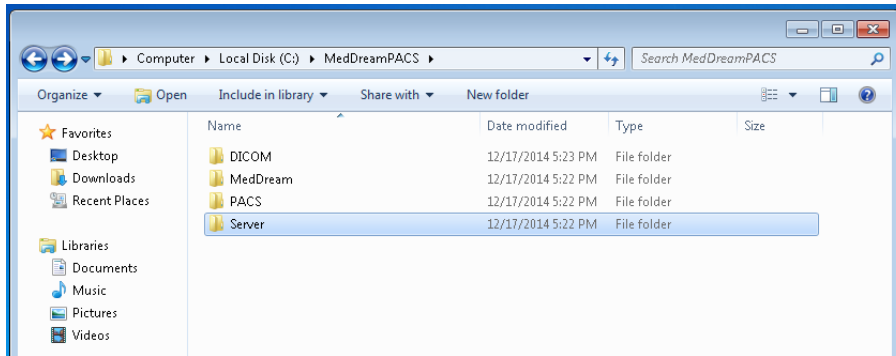


Figure 23. Saved files after uninstallation.

Uninstallator will keep some directories and files what was generated after install (study DICOM files, MedDream license and logs, PACS some logs and Server MySQL database and logs).

FiguresError! Reference source not found.

Figure 1. Setup Wizard.....	6
Figure 2. MedDream PACS Premium package information.....	6
Figure 3. Beginning of installation.....	7
Figure 4. Installation.	7
Figure 5. Microsoft Visual C++ 2005 installation.....	8
Figure 6. Microsoft Visual C++ 2008 installation.....	8
Figure 7. PACS server installation	9
Figure 8. Connection info.....	10
Figure 9. Services.....	11
Figure 10. PACS service	12
Figure 11. Processes.....	13
Figure 12. MedDream WEB interface.....	14
Figure 13. PACS web interface.....	15
Figure 14. DICOM AE administrating.....	16
Figure 15. DICOM device information.....	16
Figure 16. Add device to listening list	17
Figure 17. DICOM devices list	17
Figure 18. DICOM device configuration local example	18
Figure 19. phpMyAdmin connection.	19
Figure 20. A confirmation window of uninstallation.	20
Figure 21. Uninstalling.	20
Figure 22. Confirmation that system is uninstalled.	20
Figure 23. Saved files after uninstallation.	21

Index

I	
Installation.....	6
M	
MedDream PACS administrating interface.....	15
MedDream WEB interface.....	14
Mysql database administrating with phpMyAdmin	19
N	
Notes on the user`s manual	4
S	
Services and processes	11
Setup MedDream Pacs server to receive DICOM files	16
U	
Uninstall.....	20

MedDream PACS Premium is manufactured by Softneta UAB.

Softneta UAB
K. Barsausko str. 59
LT-51423 Kaunas, Lithuania

